



Wilmot Creek Secondary Plan

What is a Secondary Plan?



- A **policy document** that is prepared under the Planning Act.

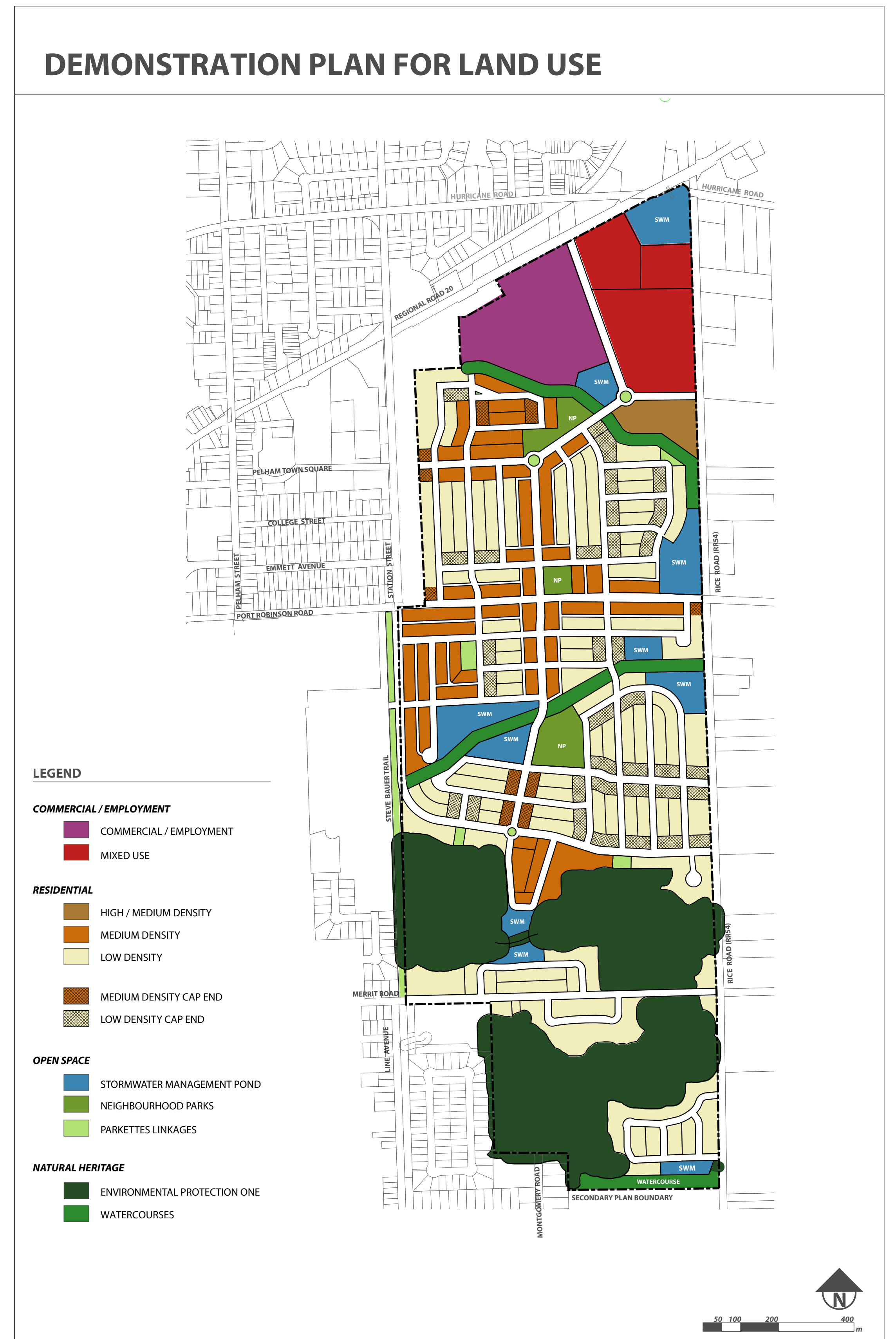


- A document that includes detailed local development policies that **guide growth in a defined area**.



- A **Secondary Plan** establishes:

- > the appropriate mix of land uses;
- > the height and density of development;
- > the road network, as well as trails and transit routes;
- > the parkland system; and,
- > protection for the natural heritage system.





Wilmot Creek Secondary Plan

Preliminary WORKPLAN

12 month process

PHASE 1

Technical Background

Update Studies

- Environmental Impact Study (GEO Morhpix) & (Savanta)
- Air Quality Assessment (RWDI)
- Archaeological Assessment (Archeoworks)
- Geotechnical Investigation (Terraprobe)
- Traffic Impact Assessment Parking Needs (GHD)
- Noise and Vibration Study (HGC)
- Fiscal Impact Analysis (Hemson)

New Studies

- Active Transportation
- Water and Wastewater Servicing Plan
- Flood Plain Analysis and Stormwater Mgmt Plan
- Landscape Analysis
- Green Development Guidelines & Energy Plan
- Urban Design Analysis
- Hydrogeological Investigation and Water Balance Study

Public Input

- Public Information Centre #1
- Online Engagement

PHASE 2

Development Concept

- Development Concept
- Draft Reports Secondary Plan
- Urban Design Plan
- Green Development Implementation Guidelines
- Zoning By-law

Public Input

- Draft Reports
- Online Engagement
- Public Information Centre #2

PHASE 3

Secondary Plan

- Final Reports Secondary Plan
- Urban Design Plan
- Green Development Implementation Guidelines
- Zoning By-law

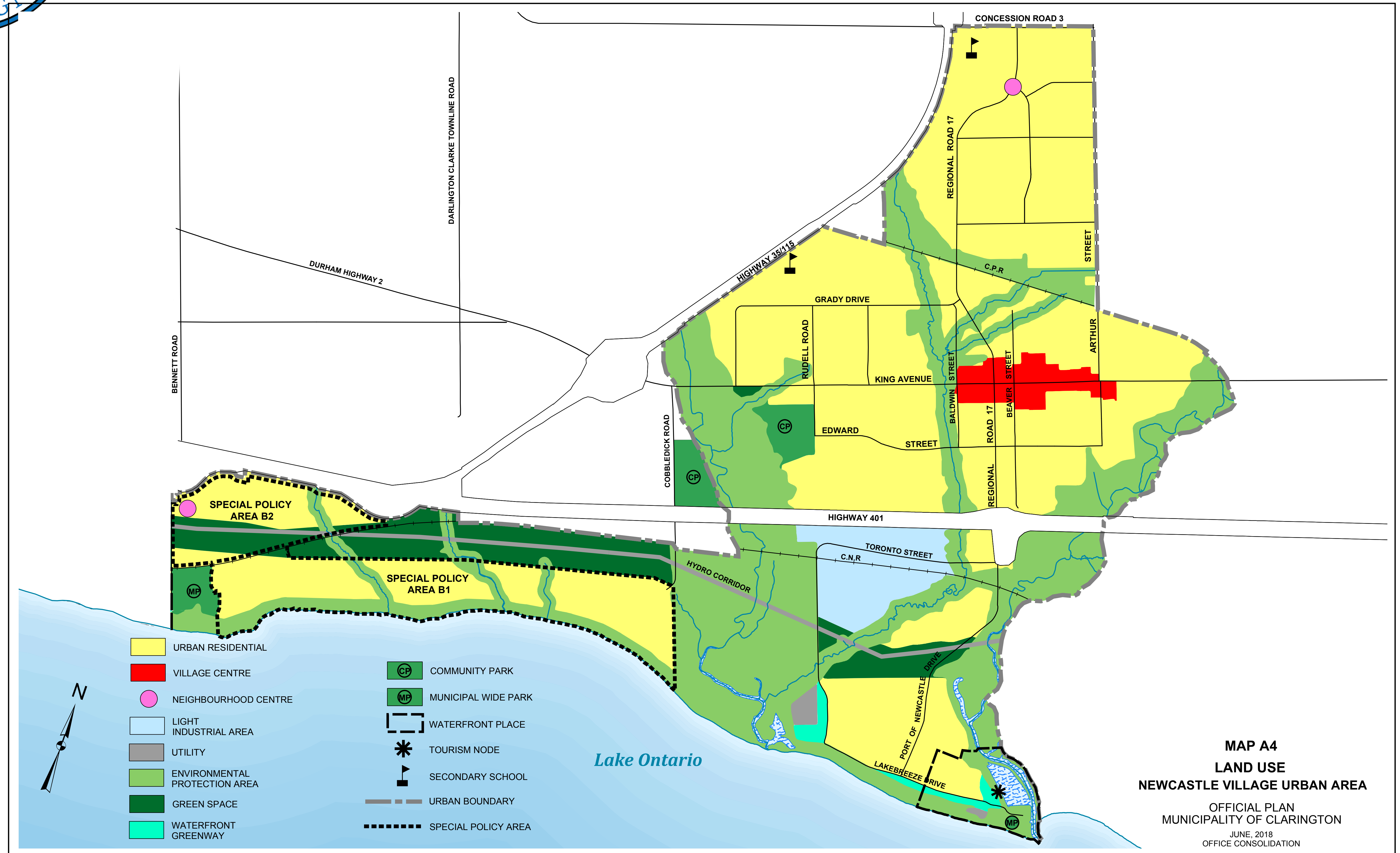
Public Input

- Online Engagement
- Statutory Open House
- Statutory Public Meeting



Wilmot Creek Secondary Plan

OFFICIAL PLAN LAND USE MAP

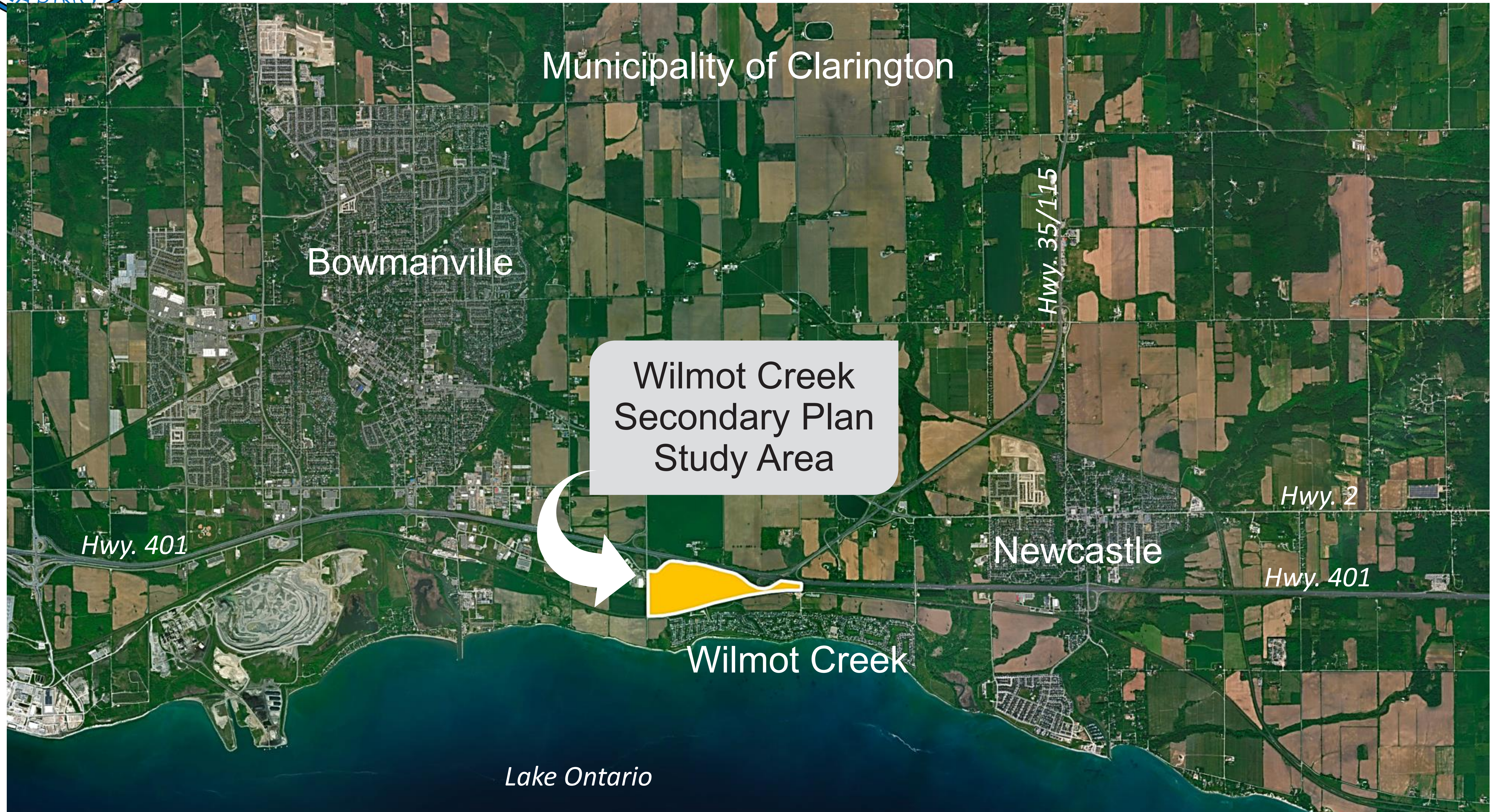


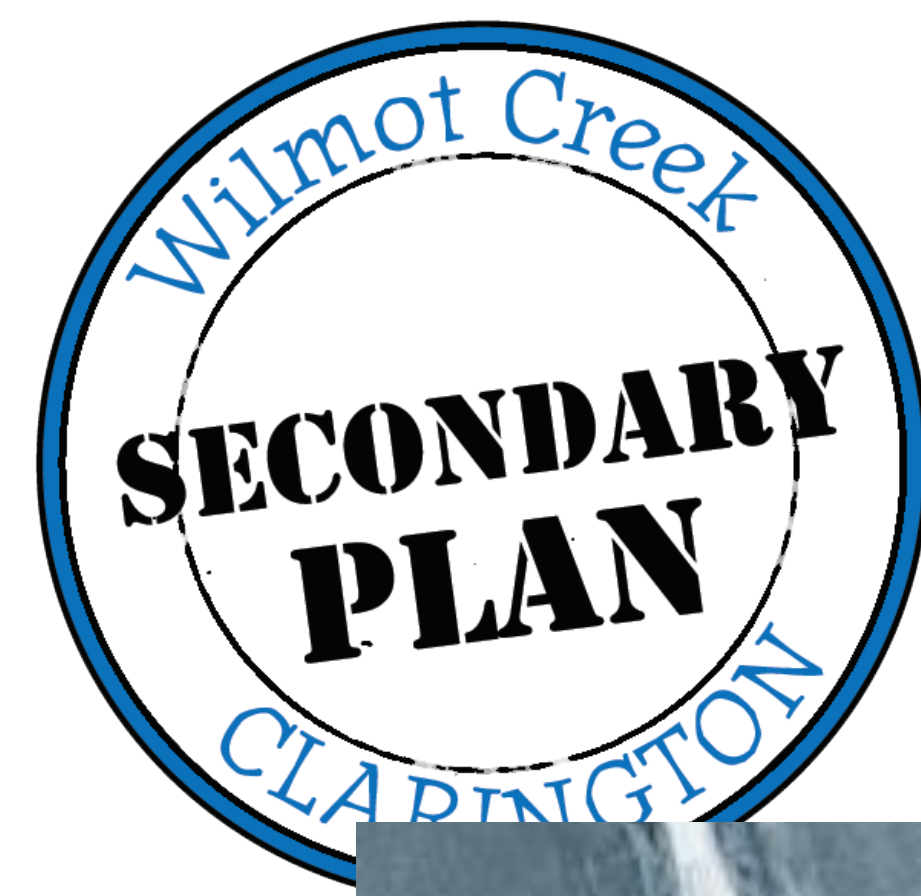
MAP A4
LAND USE
NEWCASTLE VILLAGE URBAN AREA
 OFFICIAL PLAN
 MUNICIPALITY OF CLARINGTON
 JUNE, 2018
 OFFICE CONSOLIDATION



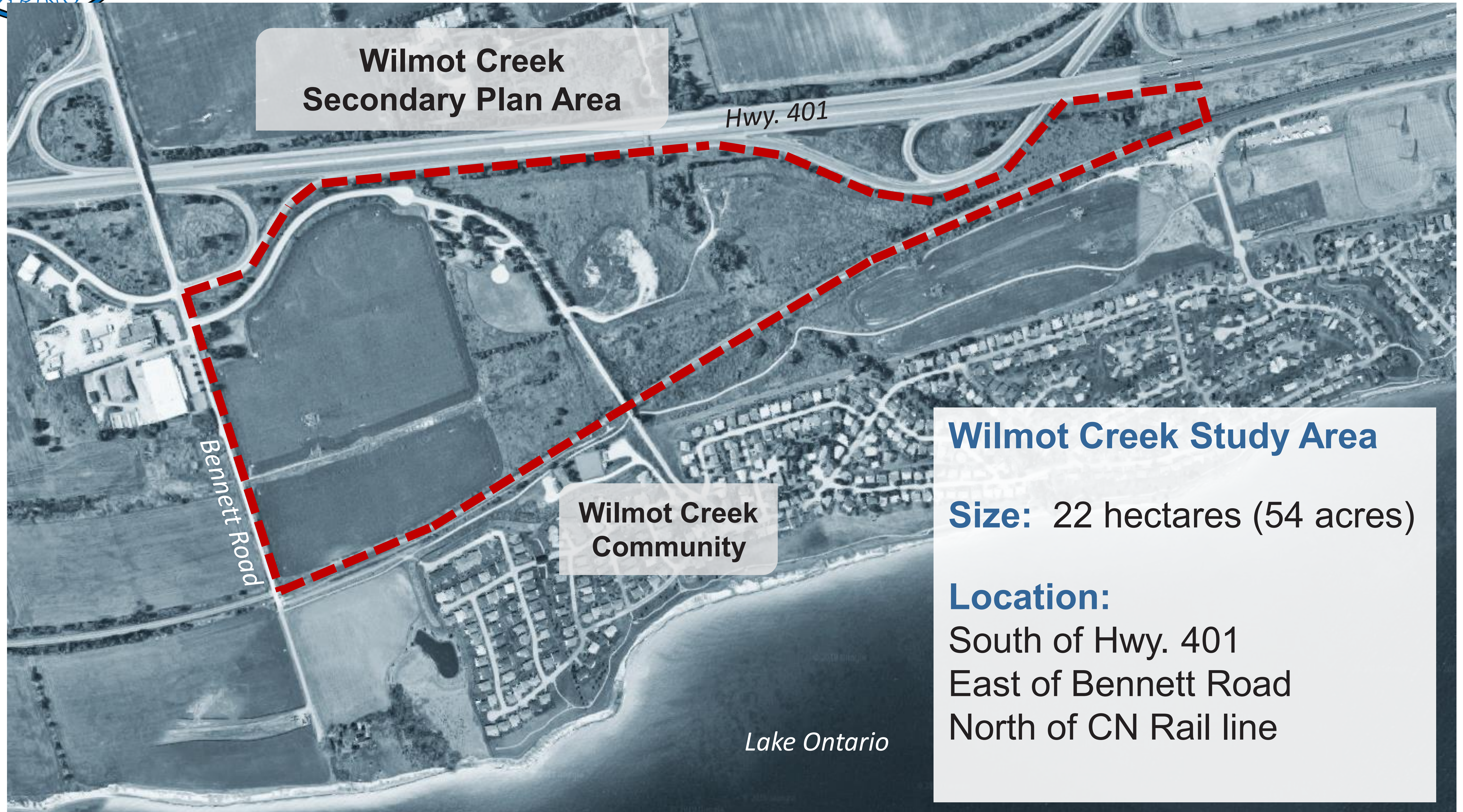
Wilmot Creek Secondary Plan

STUDY AREA - CONTEXT





Wilmot Creek Secondary Plan STUDY AREA





Wilmot Creek Secondary Plan CONSULTATION EVENTS

July to December 2018

January to April 2019

May to July 2019



Phase 1

Technical Background

Phase 2

Development
Concept

Phase 3

Secondary
Plan



**Public
Information
Centre #1
July 26**

Issues and Expectations

**Public
Information
Centre #2**

Review land use
concepts and draft
secondary plan

**Statutory
Open House**

**Statutory
Public
Meeting**



Online Engagement / Project Website

we are here



Wilmot Creek Secondary Plan

CONTACT US

Visit our website for updates

www.clarington.net/WilmotCreek

and an opportunity to submit your feedback at

wilmotcreek@clarington.net

Municipality of Clarington

Lisa Backus

[905-623-3379 x2413](tel:905-623-3379)

Carlos Salazar

[905-623-3379 x2409](tel:905-623-3379)

The Planning Partnership

Ron Palmer

[416-975-1556 x227](tel:416-975-1556)

Stacey McCulloch

[416-975-1556 x237](tel:416-975-1556)

Swerhun

Matthew Wheatley

[416-572-4365](tel:416-572-4365)