

**STAGE 1 ARCHAEOLOGICAL ASSESSMENT OF
THE SOPER SPRINGS SECONDARY PLAN STUDY,
PART OF LOTS 7-10, CONCESSION 3,
GEOGRAPHIC TOWNSHIP OF DARLINGTON, DURHAM COUNTY,
MUNICIPALITY OF CLARINGTON, REGIONAL MUNICIPALITY OF DURHAM**

SUPPLEMENTARY DOCUMENTATION

Prepared for:

SGL Planning & Design Inc.
1547 Bloor Street West
Toronto, ON M6P 1A5
Tel: 416-923-6630

Archaeological Licence P398 (Houston-Dickson)
Ministry of Heritage, Sport, Tourism and Culture Industries PIF P398-0049-2020
ASI File: 19PL-027

23 October 2020



Providing Archaeological &
Cultural Heritage Services

528 Bathurst Street Toronto, ONTARIO M5S 2P9
416-966-1069 F 416-966-9723 asiheritage.ca

TABLE ON CONTENTS

1.0 FIGURES 1

List of Figures

Figure 1: Indigenous Archaeological Sites and Potential within the Soper Springs Secondary Plan Study Area.... 2
Figure 2: Euro-Canadian Archaeological Sites and Potential within the Soper Springs Secondary Plan Study Area..... 3
Figure 3: Registered Archaeological Sites and Composite Archaeological Potential within the Soper Springs Secondary Plan Study Area 4

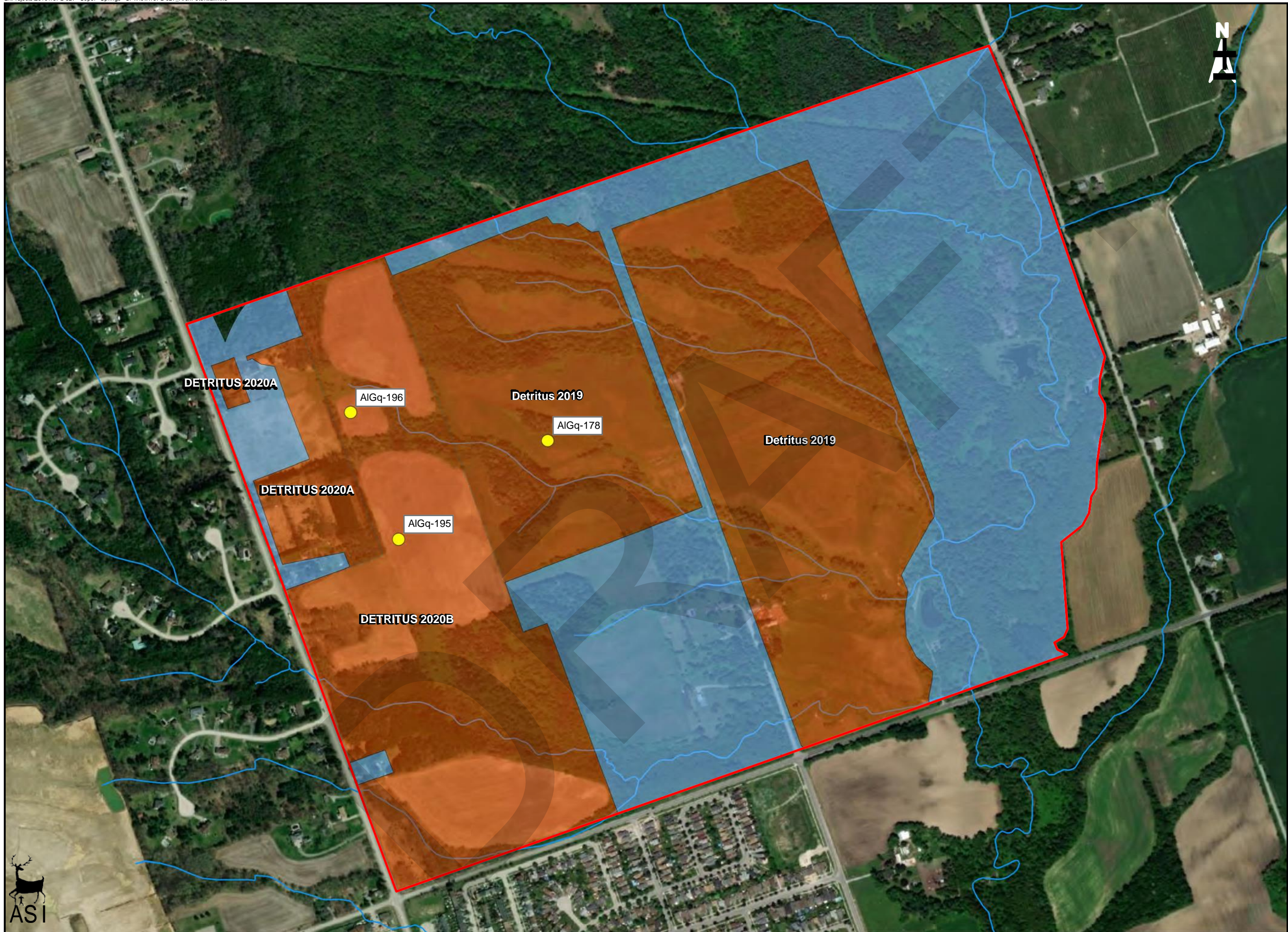
DRAFT



1.0 FIGURES

See the following pages for detailed mapping showing areas of archaeological potential including registered archaeological site locations.

DRAFT



STUDY AREA

PREVIOUSLY ASSESSED

INDIGENOUS ARCHAEOLOGICAL POTENTIAL

REGISTERED INDIGENOUS SITES

WATERCOURSE

Service Layer Credits: Source: Esri, Maxar, GeoEye, Earthstar Geographics, CNES/Airbus DS, USDA, USGS, AeroGRID, IGN, and the GIS User Community

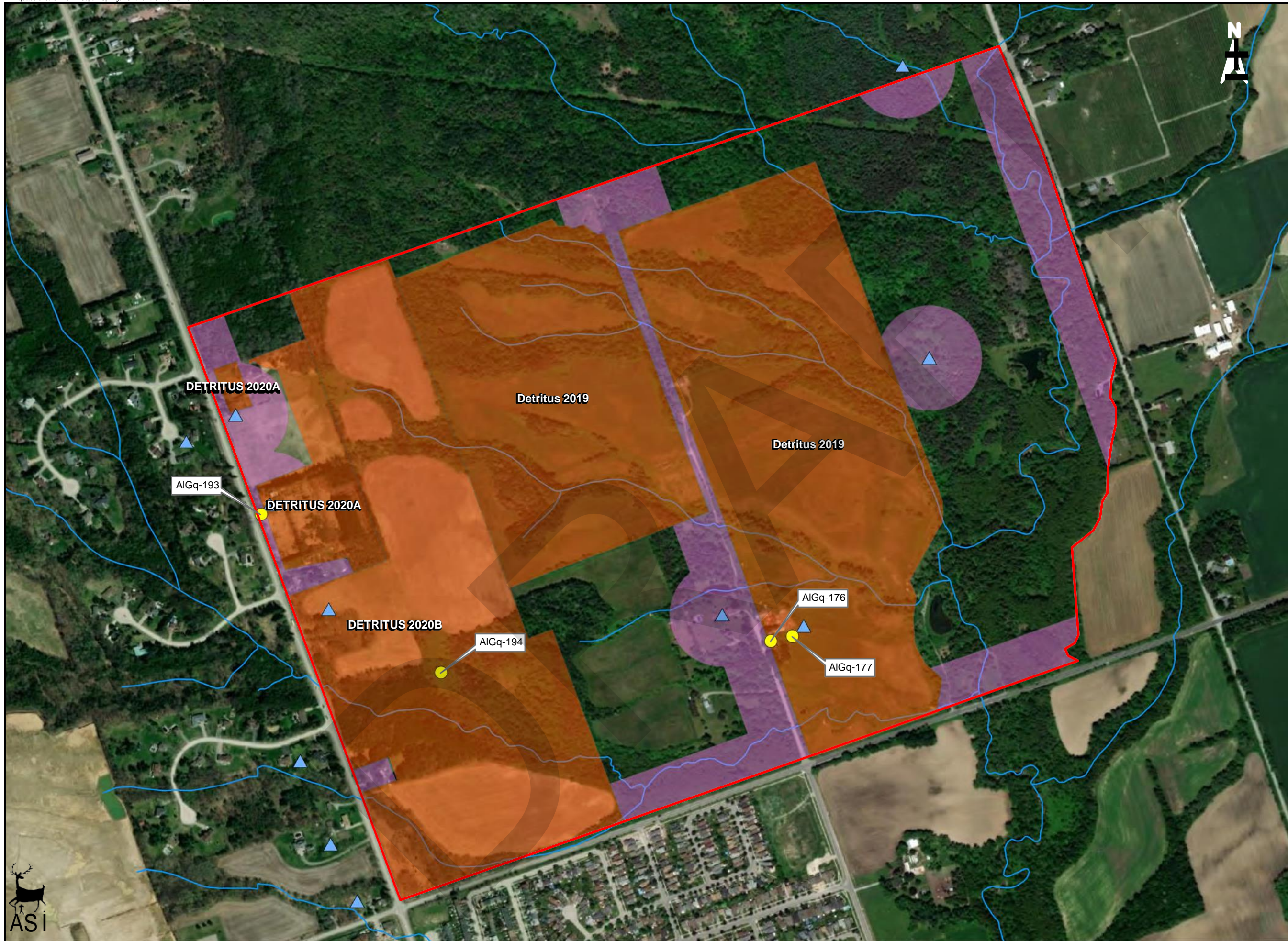
Projection: NAD 1983 UTM Zone 17N
 Scale: 1:6,876
 Page Size: 11 x 17

0 250
 Metres

ASI PROJECT NO. 19PL-027 DRAWN BY JF/ESB
 DATE 10/23/2020 FILE 19PL-027_ArchPotential



Figure 1: Indigenous Archaeological Sites and Potential within the Soper Springs Secondary Plan Study Area



STUDY

EURO-CANDIAN ARCHAEOLOGICAL POTENTIAL

PREVIOUSLY ASSESSED

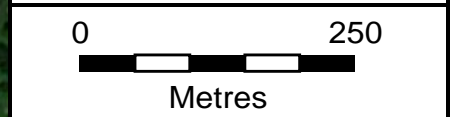
REGISTERED HISTORICAL SITE

HOMESTEAD (1861 AND 1878 HISTORICAL MAPPING)

WATERCOURSE

Service Layer Credits: Source: Esri, Maxar, GeoEye, Earthstar Geographics, CNES/Airbus DS, USDA, USGS, AeroGRID, IGN, and the GIS User Community

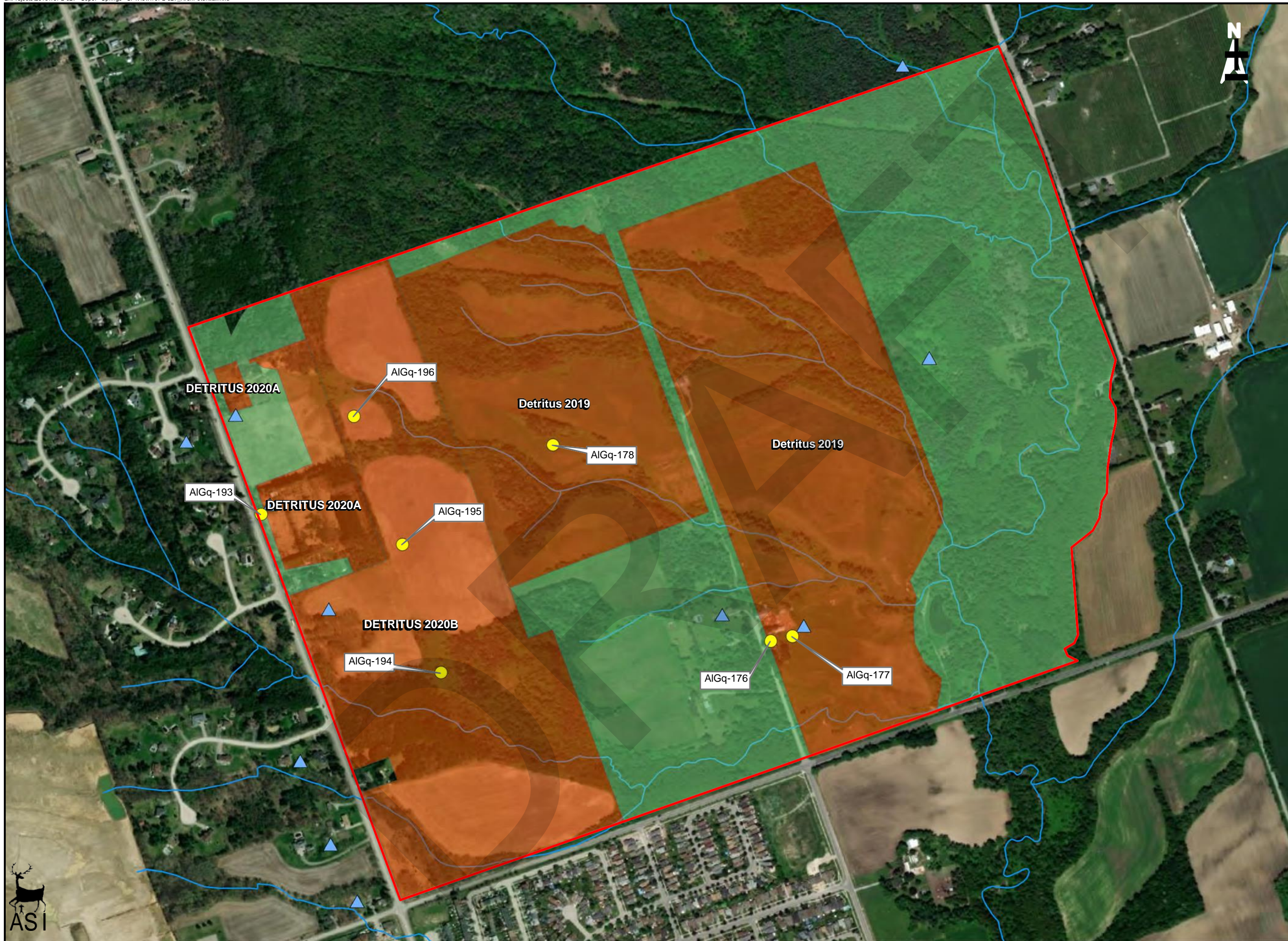
Projection: NAD 1983 UTM Zone 17N
 Scale: 1:6,876
 Page Size: 11 x 17



ASI PROJECT NO. 19PL-027 DRAWN BY JF/ESB
 DATE 10/23/2020 FILE 19PL-027_ArchPotential



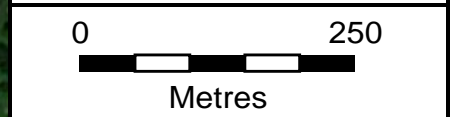
Figure 2: Euro-Canadian Archaeological Sites and Potential within the Soper Springs Secondary Plan Study area



- STUDY
- COMPOSITE ARCHAEOLOGICAL POTENTIAL
- PREVIOUSLY ASSESSED
- HOMESTEAD (1861 AND 1878 HISTORICAL MAPPING)
- REGISTERED ARCHAEOLOGICAL SITES
- WATERCOURSE

Service Layer Credits: Source: Esri, Maxar, GeoEye, Earthstar Geographics, CNES/Airbus DS, USDA, USGS, AeroGRID, IGN, and the GIS User Community

Projection: NAD 1983 UTM Zone 17N
 Scale: 1:6,876
 Page Size: 11 x 17



ASI PROJECT NO. 19PL-027 DRAWN BY JF/ESB
 DATE 10/23/2020 FILE 19PL-027_ArchPotential



Figure 3: Registered Archaeological Sites and Composite Archaeological Potential within the Soper Springs Secondary Plan Study Area